

# Nara Medical University

---

Corporate profile

---



Nara Medical University

## Contributing to society by exploring medical potentials

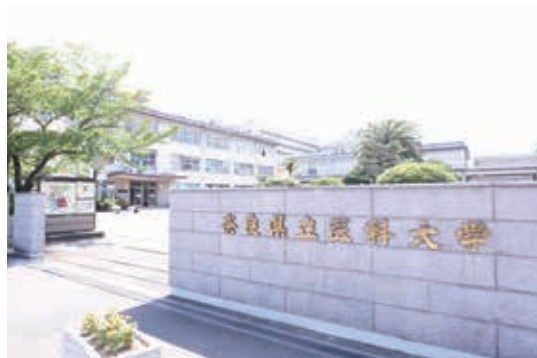
A prefectural medical vocational school was established in Nara in April 1945 and was transformed into the predecessor of Nara Medical University in 1948. It was then reorganized into the present Nara Medical University in 1952. Nara Medical University College of Nursing was established in 1996, and it was re-organized as the Faculty of Nursing, School of Medicine, Nara Medical University in 2004. Since then, Nara Medical University has been steadily advancing as a medical university with the Faculty of Medicine and the Faculty of Nursing, School of Medicine.

Nara Medical University implements a variety of educational/research activities based on cooperation agreements with other national/public and private research organizations. Our university also focuses on clinical English education and gives priority to training at overseas research institutions. We nurture physicians who will be able to fulfill leading roles in the field of medicine worldwide.

Nara Medical University has been promoting the concept of “Medicine-Based Town” (MBT) as one of its unique activities. In MBT, medical findings are utilized for engineering and town development, whereas conventional medical-engineering collaboration focuses on the application of engineering knowledge to medicine. We aim to contribute to society with the deep medical knowledge acquired by physicians. The knowledge can be applied to not only patient treatment, but also to the medically-correct development of products, residences, and towns, and related items. In 2016, we established the MBT Consortium to fulfill this goal. Approximately 100 private companies from many different fields, including energy, machinery, finance, and life insurance, participate in the consortium. We hope to integrate the powers of companies and medicine to create new industries.

Nara Medical University is not only a place where people can be educated to become health care professionals who can fulfill important roles around the world, but also a place where high quality health care services are provided. Moreover, it is a place where all the academic staff of the university are motivated and have opportunities to engaged in the activity. We are determined to recognize our roles and responsibilities and fulfill them.

President Hiroshi Hosoi







### Number of staff member

**2,356**

Executives: 4, Faculty staff: 387,  
Physicians: 388, Residents: 108  
Nurses: 1,023, Technical/Clerical staff: 446



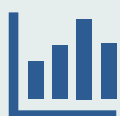
### Number of students

Undergraduate students : **1,019**

Faculty of Medicine: 679, Faculty of Nursing: 340

Graduate students : **242**

Master' s course students: 42, Doctoral course students: 200



### Financial Report

#### Settlement in 2018 (Unit: 1,000 yen)

Recurring revenue : **47,949,150**

University grants: 1,929,107, Tuition/admission and examination fees: 814,313, Affiliated hospital: 42,103,777, Donations/commissioned research: 1,291,659, Subsidies: 1,269,959, Other revenue: 540,336

Current expenses : **47,867,129**

Education/research: 2,106,802, Medical drugs: 14,579,423, Medical materials: 4,778,710, Other medical expenses: 6,916,805, Personnel expenses: 18,723,556, General administrative expenses: 702,032, Other expenses: 59,801



### Hospital information

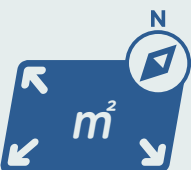
#### Number of hospital staff

Physicians: **660**, Nurses **1,023**, Pharmacists: **62**, Clinical laboratory technicians: **68**, Clinical radiological technologists: **52**, Clinical engineers: **39**, Physical/Occupational therapists: **38**, Other medical technologists: **47**, Clerical staff: **52**. Residents: **108**



#### Status of clinical care

Clinical departments: **27**, Beds (General: **875**) (Psychiatry: **108**), (Infection: **9**), Operating rooms: **15**, Surgeries per year: **8,791**, Inpatients (per day): **843**, Outpatients (per day): **2,379**; Hospitalization period (mean): **12.4** days



#### Ground area

**104,024.32m<sup>2</sup>**

#### Building area

**148,327.66m<sup>2</sup>**



For more information about Nara Medical University, please refer to our website.  
<http://www.named-u.ac.jp/>



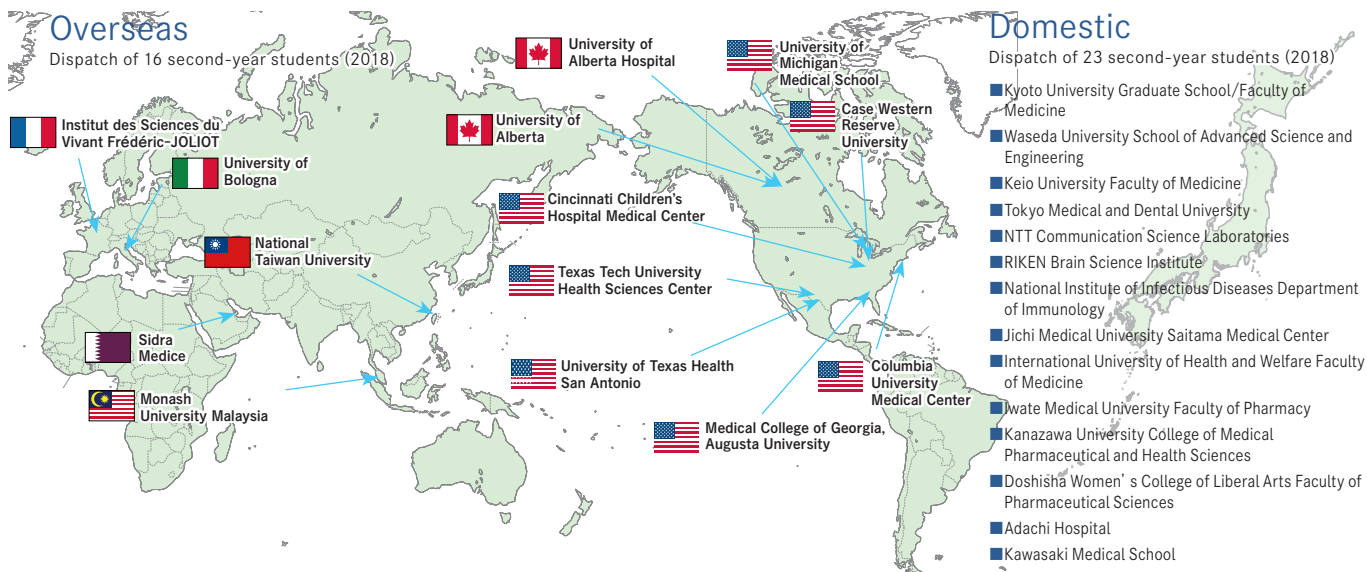
# Philosophy of Education

To train health care professionals with a strong sense of ethics and scientifically inquiring minds who are rich in humanity, can actively interact with patients, other medical specialists, community residents, and people from other countries, and are determined to promote their best effort to provide high-quality health care throughout their lives.

## Unique and characteristic education courses

### Promotion of ten-week off-campus training (in Japan and abroad)

The course aims to train health professionals and broaden their perspectives by developing inquisitive minds and promoting interactions with many people, including off-campus training (in Japan and abroad).



### Promotion of clinical English

Our university promotes English education to provide students with high clinical English skills. Native English professors and teachers teach medical and health care-related classes.

#### [Objectives]

- 1) Implementation of English education as preparatory education for medicine/nursing
- 2) Acquisition of reading, speaking, listening, and writing skills
- 3) Learning impromptu speaking and fluency for off-campus training



small group learning



hidden curriculum





### Early start of clinical training to learn procedures

Students of the university undergo clinical skills training using advanced simulators under the guidance of clinical and resident physicians from the first academic year, so that they can smoothly apply learned knowledge and skills in practical clinical training.

#### [Objectives]

- 1) Early initiation of clinical skills training for students to increase their motivation to become physicians.
- 2) Simulation training to learn the basic practical knowledge of patient safety.
- 3) Learning clinical skills from clinical physicians to understand their relations with basic medicine and their importance.
- 4) Teaching practical skills using step-by-step approaches to train health care professionals with higher medical skills.



Introduction to Clinical Skills Training

### Establishment of the NM course in the Graduate School of Medical Sciences Doctoral Course based on a “basic agreement on academic/scientific collaboration between Nara Medical University and the Council of the University of Michigan that represents the University of Michigan” .

On December 13, 2018, Nara Medical University and The University of Michigan Medical School entered into “a basic agreement on academic/scientific collaboration” with the aim of promoting their cooperation in medical education and scientific research.

In March 2019, Nara Medical University established the NM course in the Graduate School of Medical Sciences Doctoral Course based on the basic agreement to conduct research and provide lectures in relation to the University of Michigan, and have been placing an emphasis on training researchers with an international perspective.

#### [Subjects in which NM course classes are held]

- Immunology (Department of Immunology)
- Musculoskeletal Reconstruction and Sports Medicine (Department of Orthopedic Surgery) \*Names of departments are stated within brackets.



Entering into a basic agreement



## Philosophy of Research

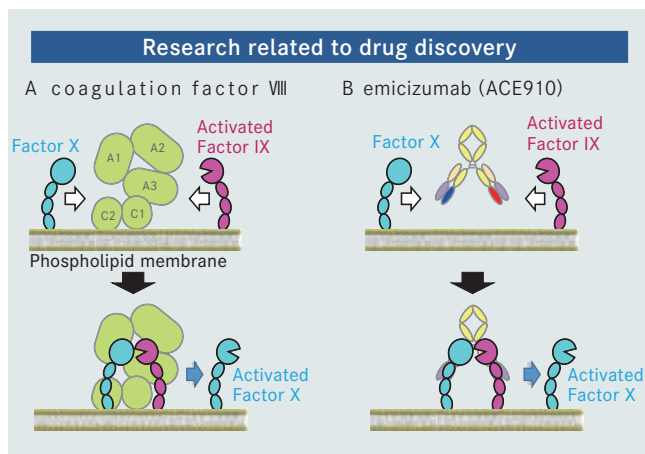
To apply the results of research to the provision of the highest quality of health care for patients to promote the health of people living in Nara Prefecture, and conduct innovative research to contribute to the progress of medicine.

## Cutting edge research leading Japan and other countries

### Research on the regulatory mechanism of thrombosis and hemostasis

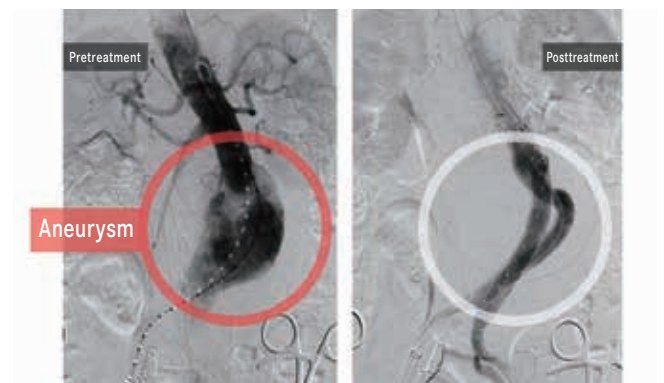
In this university, research on thrombosis and hemostasis has been performed for over half a century. In particular, we always take the international lead in studies on the pathogenesis and treatment of hemophilia. Recently, we developed a bispecific antibody (emicizumab) which is a novel therapeutic for patients with hemophilia A by academic-industrial cooperation. This is a completely humanized recombinant antibody possessing an FVIII mimetic action by bridging activated factor IX and factor X. The half-life is approximately 30 days and the clotting function can be maintained by subcutaneous infusion every 1-4 weeks. The department of pediatrics in our university lead the phase1/2 clinical studies (Shima M et al. N Engl J Med 2017) and the safety and efficacy of the drug were confirmed by international phase 3 clinical studies (N Engl J Med, 2018, 2019).

A paradigm shift in hemophilia A treatment is occurring all over the world and this drug is already being used in over 6,000 patients, in over 60 countries.



### Research on minimally invasive treatment using IVR

Nara Medical University developed interventional radiology (IVR) - a new therapeutic method in which narrow tubes (catheters and needles) are inserted into the body while viewing X-ray, CT, and ultrasonic images. Nara Medical University Hospital leads other health care institutions across Japan in the development and implementation of many different IVR-based therapeutic methods, including transcatheter arterial chemoembolization (TACE), stent-based treatment for the biliary duct, digestive tract, and occlusive arteriosclerosis, and stent grafting for aortic aneurysms. Furthermore, we conduct numerous clinical trials to promote these treatment methods in other areas of the country. The IVR center has been established in the hospital, and the number of cases and quality of medical treatments provided are the highest level in the world.



Angiography prior to and following stent grafting





# MBT Consortium Association

Commemorative symposium for the establishment of the MBT Consortium Association participated in by approximately 630 people from across Japan

## From Nara Medical University to the world

### MBT - Power of medicine for industrial/ revitalization and city/ town development -

The application of extensive knowledge owned by physicians to not only patient treatment but also a variety of industries. This is the MBT (Medicine-based Town) project. In 2016, we established the MBT Consortium Association, and its activities are participated in by more than 100 companies and organizations.

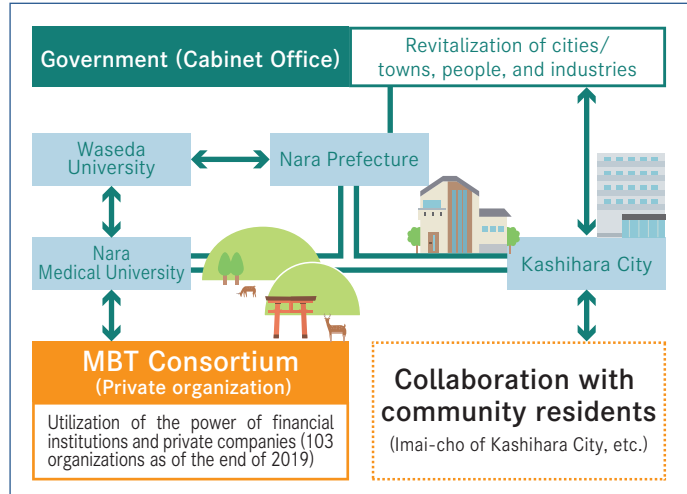
MBT Consortium Association  <http://mbt.or.jp>

### What is MBE and MBT?



- MBE** Medicine-Based Engineering  
MBE (Medicine-Based Engineering) is defined as the application of medical knowledge to all industries to develop medically-appropriate products and systems.
- MBT** Medicine-Based Town  
MBT (Medicine-Based Town) refers to the application of MBE to city/town development that responds to the era of industrial/regional revitalization and society with a declining birthrate and an aging population.

### MBT realized through collaboration



### Examples of commercialization of products through collaborative research

Product created by the venture project of Nara Medical University

**MBT Link HealthCare Service**

**MBT** The first product with MBT certification or logo

**Head-position-adjustable Sound Sleep Mattress**



## Health care philosophy

To train health care professionals who are rich in humanity and can develop caring relationships with patients, in addition to providing safe, reliable, and high-quality health care as the final line of defense to protect those living in Nara Prefecture in close collaboration with the community.

## Excellent functions of the hospital

Nara Medical University Hospital has fulfilled many different criteria and been designated/approved as a core hospital with excellent functions in Nara Prefecture.

### Provision of advanced health care Advanced treatment hospital

Nara Medical University Hospital is the only hospital in Nara Prefecture that can perform difficult surgeries and provide highly advanced medical treatment using sophisticated medical equipment and facilities, which general health care institutions cannot provide.



### Protect the lives of people in the community Disaster base hospitals

Nara Medical University Hospital can deal with emergency situations 24 hours a day; it can accept/transfer severely injured/critically ill patients in the event of disasters, and dispatch teams of physicians. It is a hospital with advanced functions that allow it to fulfill central roles in community medicine.



### Playing important roles in acute/critical care in the community Advanced Emergency and Critical and Care Center

Nara Medical University Advanced Critical and Emergency Center accepts severely-injured/ill patients from throughout Nara Prefecture 24 hours a day, as it is the only tertiary critical care institution in this (Chunanwa) area. The center provides tertiary and other care for many emergency patients, including those with internal/surgical disorders, intoxication, and burns.



#### List of the Designation as a Certified Health Care Institution (a Part)

- Designated medical institution for specified types-I and II infectious diseases ● Core hospital for clinical training
- Special medical institution covered by health insurance (advanced treatment hospital) ● AIDS core hospital ● Psychiatric emergency care institution
- Prefectural designated cancer care hospital ● Core hospital for cancer care and genomics ● Core hospital for the treatment of hepatic diseases
- General perinatal medical center ● Center for dementia care (core center) ● Kidney transplant center
- Received certification from the Japan Council for Quality Health Care (3rdG:Ver.1.1) ● Other certifications and designations from many different academic societies





## Provision of advanced medical treatment



Linac for radiation therapy  
(True Beam STx)

The hospital provides advanced cancer treatment using intensity modulated radiation therapy (IMRT) and image-guided radiotherapy (IGRT).



Hybrid operating rooms

A hybrid operating room has both operating tables and cardiovascular X-ray equipment. The combination of these two types of equipment enables health care professionals to make the most of advanced medical technology.



PET/CT equipment (Discovery IQx)

PET/CT is a diagnostic imaging system used to diagnose cancer stages and its recurrence/metastasis. As it is the most advanced type of imaging equipment with a long detector width, a large number of high quality/definition images can be obtained using the respiratory-gated method.



da Vinci Xi  
(Robot to support endoscopic surgery)

The da Vinci Xi is the most advanced robot to support endoscopic surgery. During advanced endoscopic surgery using the da Vinci Xi, an endoscopic camera and a robot arm are inserted from a 1- to 2-cm long incision.

## Comfortable space in the hospital

The hospital is designed to create a bright and warm atmosphere, providing a comfortable space for patients.



Children's ward



Staff station



Rest areas

## Community activities/ events

As a base to provide information on mental and physical health, the hospital considers the importance of communication with local people. Nara Medical University Hospital holds a variety of events, such as art exhibitions in the hospital to present art created by students with special needs in the halls, in-hospital concerts, and public lectures.



Art exhibition



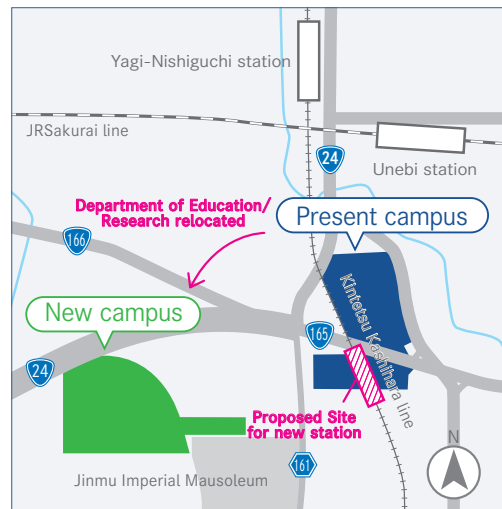
# The campuses of Nara Medical University will be renovated

Since the campus has become old, the Department of Education/Research is transferring to a new and large campus located approximately 1 km southwest of the existing one (premises of the former Nara Prefecture Agricultural Research and Development Center), which an emphasis will be placed on the further improvement of the affiliated hospital. The new campus has adopted a zoning and design using a motif of The Ancient Capital of Fujiwara based on “the basic plan for the development of the new campus” created in March 2019. Facilities for the Departments of General Education and Nursing are scheduled to be completed in 2024 as part of the preceding development plan.

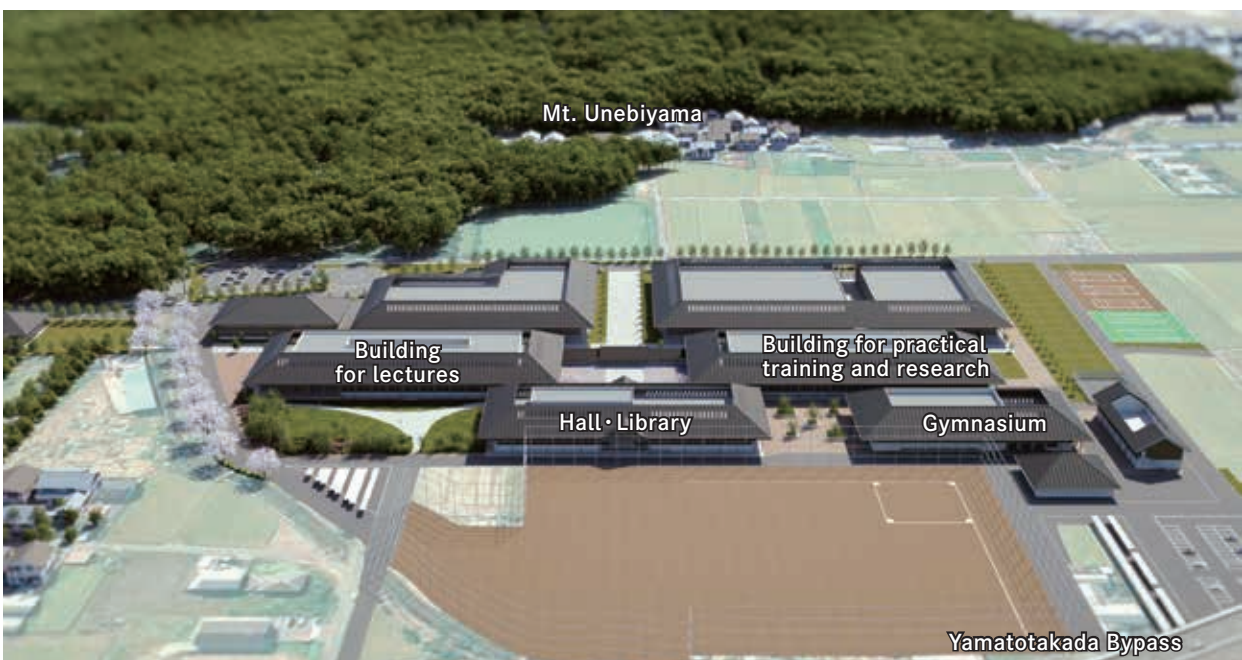
## Development of the new campus



New campus



Relative positions of the two campuses



New campus: An overview image of the new campus shot from the north



# History of Nara Medical University



In 1945, Nara Medical University was established in Kashihara City - one of the ancient cities of Japan, as the only school for training physicians in Nara Prefecture. Since the establishment of the university, the Faculty of Medicine has a 70-year history.

After evolving as a medical university with the Faculty of Medicine, the School of Medicine for a long period of time, a four-year faculty of nursing was established in 2004 and continues to advance as a medical university with one school and two faculties.

The predecessor of the Department of Nursing is the nursing school of Nara Prefectural Kyodo Hospital established in February 1939. In 2007, Nara Medical University became a public university corporation to facilitate efficient management, while emphasizing its public status and public interests.

- 1945. 04 Nara Prefectural Medical College was established as the predecessor of Nara Medical University.  
The affiliated hospital was established (8 clinical departments and 215 beds).
- 1947. 07 Preparatory courses from the former Nara Medical University were held.
- 07 The name of the hospital was changed to Nara Medical University Hospital.
- 1948. 04 The School of the former Nara Medical University Hospital was established.
- 1952. 04 (Present) Nara Medical University was established.
- 1955. 04 A specialized nursing school affiliated with Nara Medical University was established.
- 1960. 04 Nara Medical University Graduate School of Medicine was established.
- 1961. 12 School regulations of Nara Medical University were established.
- 1994. 03 Philosophies and objectives of the university were decided.
- 1996. 02 Nara Medical University Hospital was designated as an advanced treatment hospital
- 04 Nara Medical University College of Nursing was established.
- 2004. 04 The Faculty of Nursing, School of Medicine, Nara Medical University, was established.
- 2007. 04 The University was reorganized into Public University Corporation Nara Medical University.
- 2015. 05 Commemoration ceremony for the 70th anniversary of the establishment of the university.
- 2016. 09 Building E of Nara Medical University Hospital was built.
- 2017. 04 "The Future Vision of Nara Medical University" was developed.
- 04 A symbol and image character were created for the university corporation.
- 09 The affiliated hospital received a certification of Quality Health Care 3rd G' ver.1.1.
- 11 Imai-cho Guest House was opened.
- 2018. 02 A doctor helicopter port was built on top of the affiliated hospital.



Panoramic view around 1965



Panoramic view in 2018



"The Future Vision of Nara Medical University" was developed. (2017)



A doctor helicopter port was built on top of the affiliated hospital. (2018)



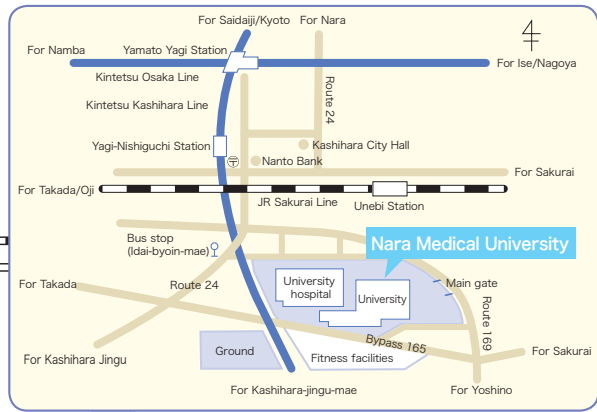
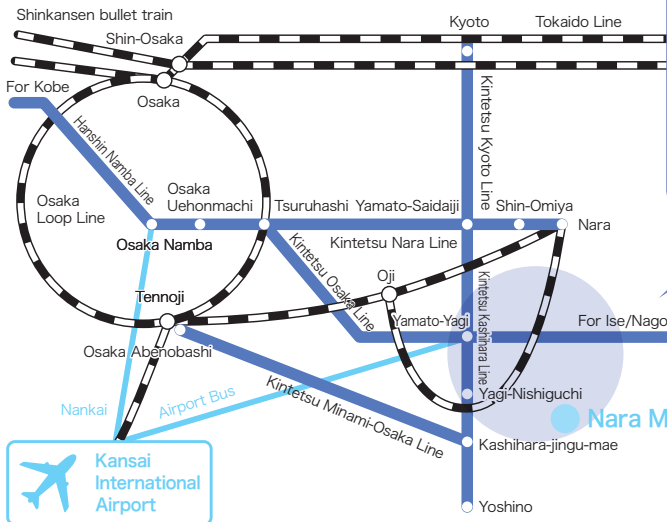
奈良県立医科大学  
Nara Medical University



(Syoutokutaishikun)

Corporate symbol mark, image character

# Transportation

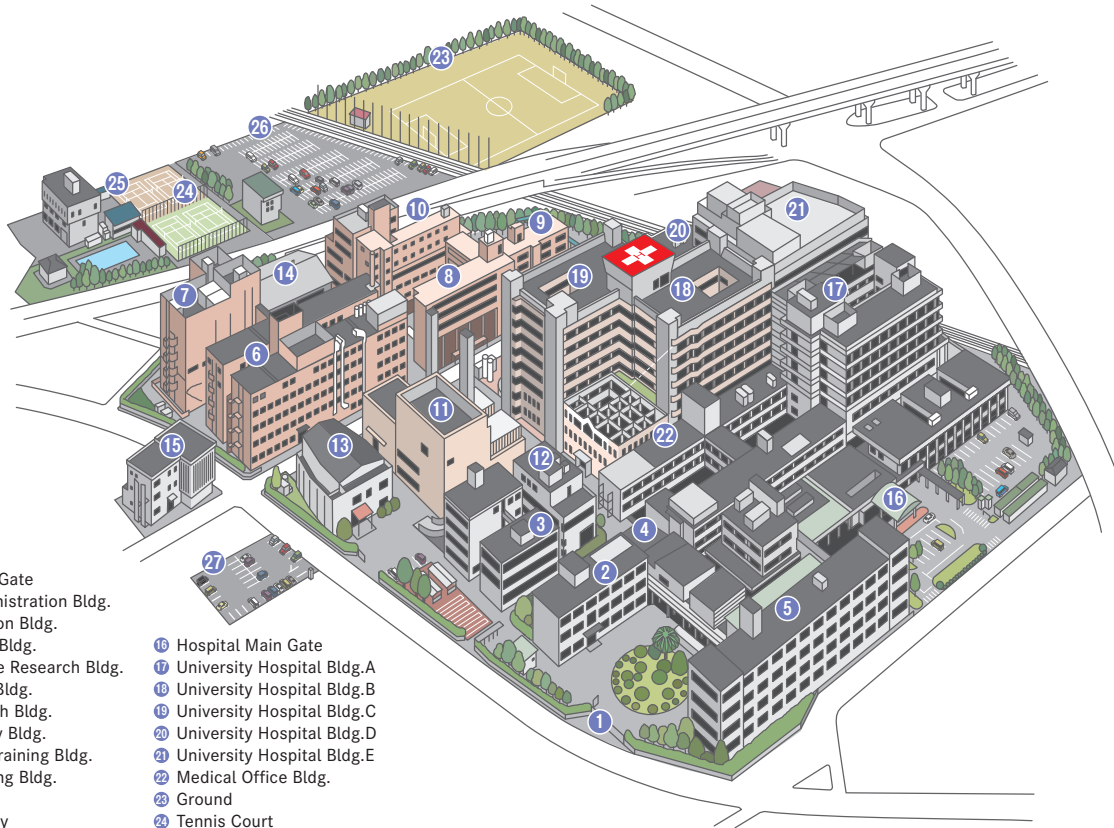


### By train

- 10-minute walk from Unebi Station of the JR Sakurai Line
- 15-minute walk or 8-minute bus ride from Kintetsu Yamato-Yagi Station
- 8-minute walk from Kintetsu Yagi-Nishiguchi Station

### By bus

- Take the bus from Kintetsu Yamato-Yagi Station and get off at:
- "Idai-byoin-gekan-guchi" bus stop (Nara Kotsu Bus)
  - "Nara Idai Hospital" bus stop (Kashihara City Community Bus)



- |                                    |                               |
|------------------------------------|-------------------------------|
| 1 University Main Gate             | 16 Hospital Main Gate         |
| 2 University Administration Bldg.  | 17 University Hospital Bldg.A |
| 3 General Education Bldg.          | 18 University Hospital Bldg.B |
| 4 Clinical Lecture Bldg.           | 19 University Hospital Bldg.C |
| 5 Clinical Medicine Research Bldg. | 20 University Hospital Bldg.D |
| 6 Basic Medicine Bldg.             | 21 University Hospital Bldg.E |
| 7 General Research Bldg.           | 22 Medical Office Bldg.       |
| 8 Skills Laboratory Bldg.          | 23 Ground                     |
| 9 Education and Training Bldg.     | 24 Tennis Court               |
| 10 Faculty of Nursing Bldg.        | 25 Kyudo Hall                 |
| 11 Energy Center                   | 26 Parking Lot1               |
| 12 University Library              | 27 Parking Lot2               |
| 13 Auditorium                      |                               |
| 14 Gymnasium                       |                               |
| 15 Itsukashi Hall                  |                               |



## Nara Medical University

840 Shijo-Cho, Kashihara, Nara 634-8521, Japan

Phone Number : +81-744-22-3051

URL <http://www.naramed-u.ac.jp/>